



**Message from
Mental Health Support Team**

Hi all!

My name is Mirrin and I am a Trainee Education Mental Health Practitioner for the Mental Health Support Team at Children and Family Health Devon. I will be working at Willand School every Monday afternoon. I am in training to work with young people who are experiencing mild to moderate symptoms of low mood, anxiety and behavioural difficulties. This will be through administering Low Intensity CBT in the form of 1:1 or groups. I also offer support to parents and carers in the form of group or 1:1 interventions and psychoeducation groups. If you want any more information, please feel free to get in touch with Hannah Telling.

School email Addresses

We have several email addresses to help your enquiries to get to the right person.

absence@willand.devon.sch.uk to report pupil absence

lunches@willand.devon.sch.uk to provide lunch choices or for any lunch queries.

office@willand.devon.sch.uk for queries, change of details or messages

governors@willand.devon.sch.uk to contact the Governing Body

Please do not use the admin@willand.devon.sch.uk for any urgent messages as this is not monitored on a regular basis.

Year 4 Swimming

Thank you to all parents that have already given a voluntary contribution for swimming. If you would like to contribute, you still can. To enable the activity to go ahead, the voluntary contribution is £2.35 per session payable every Monday morning. The activity can only take place if there are sufficient voluntary contributions. To assist you, sessions can be purchased in full or weekly online using the school gateway app. The total cost is £25.85. Cheques to be made payable to Devon County Council.

Please help us to provide this activity by continuing to support the school.

Lunch Orders for Late Arrivals

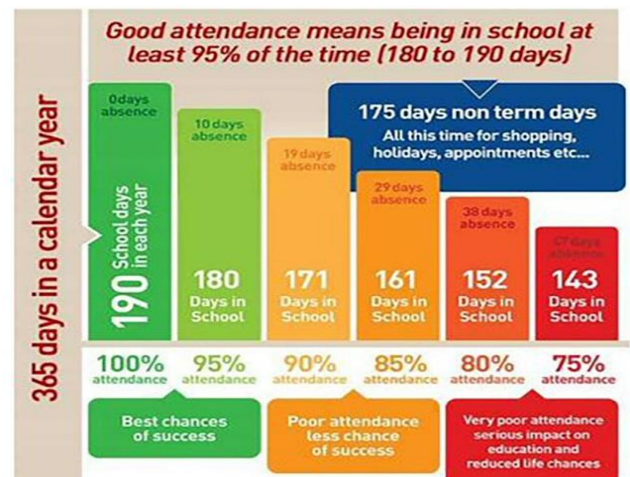
If your child is going to be arriving at school late and would like a school meal, please always inform the school office of their meal choice meal before 9:30am.

Attendance

As part of Devon County Council's drive to improve school attendance, we will be sharing our attendance statistics with you for the week ending Thursday, 23rd May 2024.

Year Group	%Attendance	Year Group	%Attendance
Reception	97.85	3	97.90
1	95.47	4	95.27
2	98.94	5	97.14
		6	96.29

The Current National figure for comparison is 94.2%



DID YOU KNOW? A two week holiday in term time means that the highest attendance you can achieve is 94.7%

Individual and Family Photographs

The photographer will be in school on Thursday 26th September.

If your child has PE on that day, please send them in with a polo shirt and sweatshirt so that they can wear them for their photo.

If your child has a younger sibling (not attending Willand School) and you would like a family photo taken, then please arrive from 8am. Photos will be in the school hall so entry will be via the Reception class entrance. These are family photos so are for babies and up to starting school age. Siblings currently in school will have both an individual and family photo taken during the school day.

Thank you for your continued support
Naomi Tottle
Headteacher

Contact us: Telephone: 01884 820367 / 829463 **Website:** www.willand.devon.sch.uk **Email:** office@willand.devon.sch.uk
governors@willand.devon.sch.uk lunches@willand.devon.sch.uk absence@willand.devon.sch.uk
Online Payments: <https://login.schoolgateway.com> **PTFA:** willandschoolptfa@gmail.com

Online Safety –

'Wake Up Wednesday'

Attached are the latest top tips from the National College. This week's theme is ...



'QR Code Scams'

Chances are, you've probably scanned a QR code or two in your time – giving you a quick and easy shortcut to a website, a social media profile, or some other online resource. Sadly, scammers have taken to using them to trick the public out of their personal information. In fact, Greater Manchester Police have said there has been a "steep rise" in the use of malicious QR codes as a "new way to defraud people". This comes after the UK's National Anti Fraud Network, Action Fraud, found that over half the people using QR codes struggled to know whether they're legitimate.

While the importance of keeping yourself safe from these scams goes without saying, it can be tricky to know which codes can be trusted and which should be avoided. That's why we've put together this free guide, detailing where you might run into a QR code scam and offering expert advice on how to prevent yourself and others from being tricked by these fraudsters.

As always, if you have any questions relating to online safety, please contact Mrs Maynard (Online safety Lead)

PTFA NEWS

Hi Everyone!

Just a quick update of our grand total so far for the new playground. We have managed to raise £9400 towards our goal of £15,000! This is fantastic as we are still supporting the school with trips and hopefully year 6 leavers hoodies again. We are also helping to develop the environmental area during half term too.

We do have some left over prizes to be claimed from the wonky bars please can these be claimed by the end of the month.

We have some fabulous things lined up for this term and the first of these is a bake sale. After the schools one was so successful in adding to the total that was raised for Children in Need last November. We have decided to do our own on Monday 14th October, to allow the bakes to be done over the weekend. Please look out for more information on this.

Our next meeting will be our AGM which is 18th October 6.30pm at the school. If anyone would like to take up the positions of Chair, Co-Chair, Secretary, Treasurer, Grants Officer and Social Media role or would like to become part of the PTFA please email us on willandschoolptfa@gmail.com or come along.

Lastly, we still have pre-loved uniform if anyone needs any please email us.

Thank you for your ongoing support.

Your PTFA Team

SEND Information



Early Help

We would like to introduce you to Mrs Moss, our school's Early Help Co-ordinator.

Her role supports families who may find it difficult to manage some challenges alone and if helpful, she will identify some extra support at an early stage to prevent difficulties growing.

Early help might be offered if:

- Your child has poor school attendance
- Your child has an illness, disability or additional needs or they are a young carer.
- Your child has anxiety, depression or other mental health issues.
- Your family is affected by housing or financial problems.
- Anything else is having a negative impact on your family.

Taking part in early help is voluntary and can only happen with your permission. You can be referred to early help by professionals working with your family – like a teacher, GP or Health Visitor.

For more information, please click onto the following link:

[How can early help services support my family? - Support for Parents from Action For Children](#)

Willand School Lunch Menu for week commencing Monday, 23rd September

MONDAY	TUESDAY	WEDNESDAY	THURSDAY	FRIDAY
Pork meatballs	Turkey Dinosaur	Gammon and pineapple	Sausages	Salmon Fingers
Vegan balls	Quorn Dippers	Cheese & Broccoli bake	Quorn sausages	Vegetarian Pizza
Spaghetti Green beans	Pasta/waffles	Roast/Mashed Potatoes	Pasta or mash	Chips or Pasta
Crisps	Sweetcorn	Fresh Carrots	Baked beans/ peas	Seasonal vegetables
Salad Bar	Tomato sauce	Gravy	Salad Bar	Tomato Sauce
	Salad Bar	Salad Bar		Salad Bar
Arctic Roll	Chocolate cracknel	Orange Jelly	Sticky Toffee	Homemade
Fresh Fruit	Fresh Fruit	and mandarins	Pudding and	Cookie
Yoghurt	Yoghurt	Yoghurt	caramel sauce.	Fresh Fruit
			Fresh Fruit	Yoghurt
			Yoghurt	

PASTA POTS with Italian tomato sauce or cheese

JACKET POTATO with cheese, beans or tuna

WRAPSWITH FILLINGS: Ham, Chicken or Cheese

Contact us: Telephone: 01884 820367 / 829463 Website: www.willand.devon.sch.uk Email: office@willand.devon.sch.uk
governors@willand.devon.sch.uk lunches@willand.devon.sch.uk absence@willand.devon.sch.uk

Online Payments: <https://login.schoolgateway.com> PTFA: willandschoolptfa@gmail.com

Safeguarding - From time to time the school may need to make referrals to Children and Young People's Services

AUTUMN TERM 2024	
Thursday 5 th September	Start of term
Thursday 26 th September	Individual and Family Photographs
Thursday 3 rd October	Flu immunisations
Thursday 3 rd October	Uffculme School Open Evening for Yr5/6 parents – 6pm-8pm
Thursday 10 th October	Cullompton CC Open Evening for Yr5/6 parents – 4:00pm-7pm
Thursday 10 th October	Parent Consultations
Tuesday 15 th October	Parent Consultations
Friday 18 th October	Harvest Festival
Friday 25 th October	Non-pupil day
Monday 28 th October - Friday 1 st November	Half Term
Wednesday 6 th November	Parent Tour for Reception '25 @ 9:30am
Monday 11 th November	Armistice Day
Tuesday 12 th November	Parent Tour for Reception '25 @ 9:30am & 2pm
Friday 15 th November	BBC Children in Need Day
Thursday 21 st November	Parent Tour for Reception '25 @ 9:30am & 2pm
Monday 25 th November	Parent Tour for Reception '25 @ 9:30am & 2pm
Tuesday 10 th December	Y1&2 Play Dress Rehearsal
Wednesday 11 th December	Y1 & 2 Play 1.30 pm 5.30pm
Thursday 12 th December	Save the Children Christmas Jumper Day
Friday 13 th December	Reception Classes Christmas Celebration 9:30am
Monday 16 th December	Reception & KS1 Christmas Party
Tuesday 17 th December	KS2 Christmas Party
Wednesday 18 th December	Christmas Lunch
Friday 20 th December	End of Autumn Term

SPRING TERM 2025	
Monday 6 th January	Start of Spring Term
Thursday 6 th February	Parent Consultations
Tuesday 11 ^h February	Parent Consultations
Tuesday 11 ^h February	Safer Internet Day
Friday 14 th February	Non-pupil Day
Monday 17 th – Friday 21 st February	Half Term
Thursday 6 th March	World Book Day
Friday 21 st March	Red Nose (Comic Relief) Day
Friday 4 th April	End of Spring Term

SUMMER TERM 2025	
Tuesday 22 nd April	Start of Summer Term
Saturday 3 rd May	Exmoor Challenge
Monday 12 th – Friday 16 th May	Year 6 KS2 SATS
Friday 23 rd May	Non-pupil day
Monday 26 th May – Friday 30 th May	Half Term
W/C Monday 2 nd June	Multiplication Check
W/C Monday 9 th June	Phonics Check
Wednesday 11 th June	Willand Welcome
Tuesday 24 th June	Sports Day
Friday 27 th June	Reserve Sports Day
Tuesday 1 st July	Year 6 Transition Days for Cullompton CC & Uffculme School
Friday 11 th July	Pupil reports out
Monday 14 th July	Teachers available for parents
Wednesday 16 th July	UKS2 Play Dress rehearsal
Thursday 17 th July	UKS2 Play
Monday 21 st July	Leavers Party
Tuesday 22 nd July	Leavers' Assembly
Wednesday 23 rd July	End of Summer Term

EVENTS

Please see the noticeboard outside the school office for the following events

SENsationalSupport Group for parents with children who have additional needs. This confidential, non-judgmental group meet fortnightly on Thursday mornings between 10am-12noon at St Mary's Church Hall Willand. For further details see parent noticeboard or telephone Sam: 07890429062 or Kim 07721610785.

Please note that we are unable to check on the validity of the companies or the people running the schemes, and if those working with children have the correct police checks.

Contact us: Telephone: 01884 820367 / 829463 **Website:** www.willand.devon.sch.uk **Email:** office@willand.devon.sch.uk
governors@willand.devon.sch.uk lunches@willand.devon.sch.uk absence@willand.devon.sch.uk
Online Payments: <https://login.schoolgateway.com> **PTFA:** willandschoolptfa@gmail.com

Safeguarding - From time to time the school may need to make referrals to Children and Young People's Services